

Genesis build.

The smart and affordable home building system.

Internationally proven smart buildings.

AQUIRE GLOBAL (PVT) LTD.

107 ST ANTHONY'S MAWATHA.

COLOMBO 3.

Sri Lanka.

www.aquireglobal.com

info@acquireglobal.com. Tel-+94117013011, 0777725655



AG steel houses bring you the best building experience and a home to be proud of. Love life and live in comfort and the luxury of feeling safe in your home. We provide true value for money and a home in double quick time. Smartly built for smart living and enjoy lifetime savings.

Aquire Global (Pvt) Ltd is proud to introduce this internationally proven efficient building solution to Sri Lanka.

The technology using light steel structures and lightweight wall panels has been in existence for many decades and is used in almost every country.

Light steel structure homes are environment friendly saves time and money and conform to the highest quality standards. They provide comfort through better thermal insulation, lower sound absorption and most of all safety through higher fire ratings and disaster resistance.

Partnering internationally acclaimed suppliers our experienced team has selected each and every component of our houses to suite the demands of social and environment conditions in Sri Lanka.

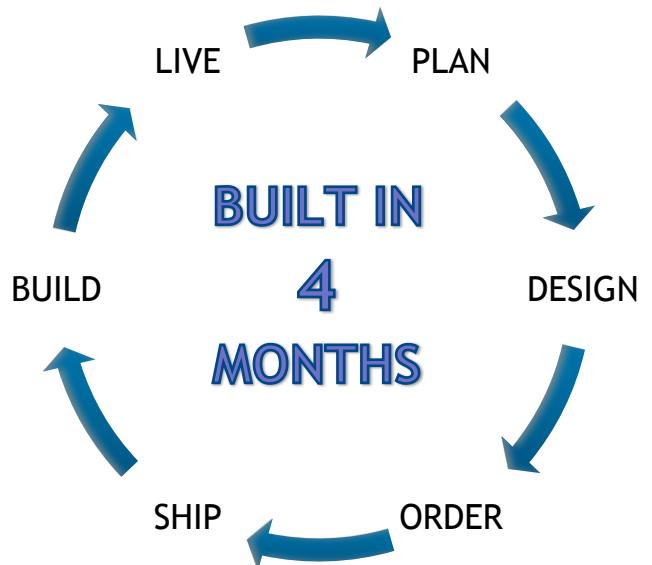
We provide you solutions from design to completion in order to make every homebuilding experience a joy. No more will you have to wait for years for your house to be completed. Your house will be completed in less than four months and you wouldn't have labored a day.

Most of al our homes are the best value for money

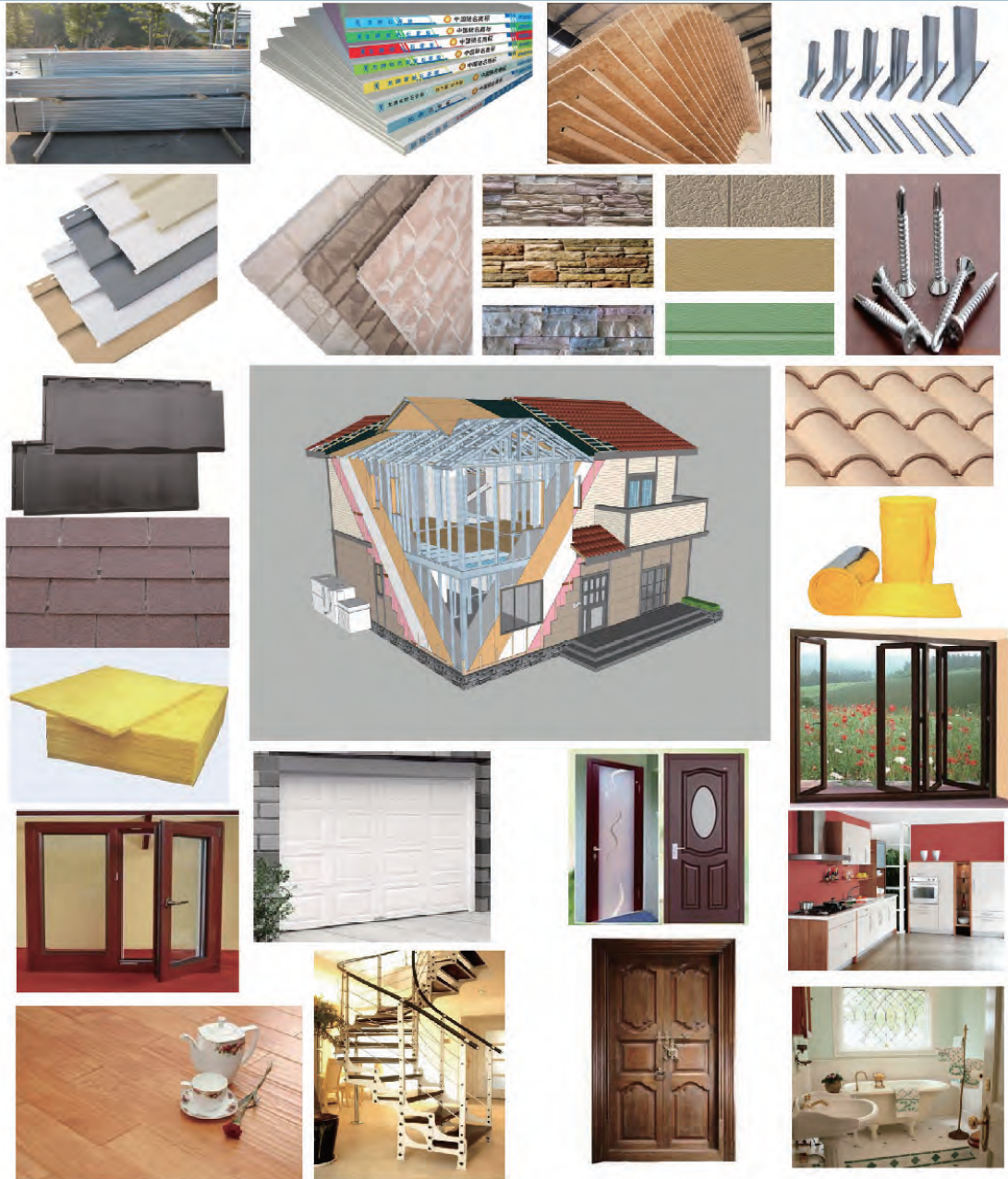
as every component is of the highest quality and guaranteed to last a lifetime.

Our systems allow you the flexibility of selecting the options to your liking and your budget and knowing that every piece of your home is of high quality.

What's more when you have the confidence that your house is safe against most disaster.



Quality certified material



CUSTOMISE YOUR HOME WITH EVERY PIECE OF MATERIAL FROM THE HIGH QUALITY STEEL STRUCTURE TO AN INFINITE RANGE OF FINISHES AND FITTINGS.

WE GIVE YOU VALUE FOR EVERY CENT YOU SPEND.

DOUBLE GLAZED WINDOWS- STEEL SECURITY DOORS- SOLID WOOD DOORS- ENGINEERED WOOD FLOORS- HIGH QUALITY COATINGS-BEST IN CLASS FITTINGS AND CONTINUED SAVINGS.

We build exactly what you dream of.

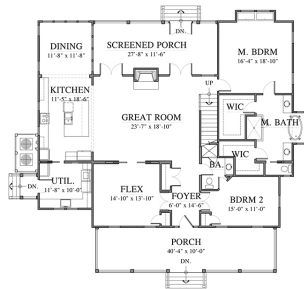
Your home is your pride and we give you value and unmatched quality.

Keeping your family safe is your priority.

Build smart, live smart.

Light Steel Home Specification		
Key Features	Item Title	Materials Description
House Body	Main Structure	Light Steel Structure, EPS lightweight panels.
	Exterior Wall & Decoration	75 to 100 mm Fibre cement EPS sandwich panel walls with lightweight solid core. Putty paint primer and finished to customer choice.
	Roof/Cornice	Roof: Single-layer bituminized tiles, 3mm SBS water proof rolling material, 15mm OSB board or as requested by customer. Cornice: 75mm steel stud, calcium silicate board, / Fibre cement board. Putty paint
	Rain Carrying System	PVC rain carrying system
	Doors and Windows	Security Steel/ timber door, paint-free door, glass door, plastic steel window, artificial wood/ aluminum/ PVC/UPVC windows.
Finishing	Interior Wall Decoration	75 to 100 mm Fibre cement EPS sandwich panel walls with lightweight solid core. Putty paint primer and finished to customer choice.
	Interior Ceiling	Fire proof gypsum board / Cement board/ PVC/ Timber putty and paint
	Water and Electricity Pipes	Water supply PPR pipe, drainage PVC pipe Switch socket panel, lamp all as per customer preference.
	Indoor Ground	Floor and accessories, kitchen and washing room tile or as per customer preference.
	Other Materials	Toilet and all fittings as per customer choice.
Installation	Complete house Installation on 4 months.	
Loading Quantity	One 40' container can load 140m ² House or multiples according to size.	
Wind Load	130km/h	
Other	Fire resistant, Sound proof 60 to 80db, termite resistant.	
Anti-seismic Grade	9 Degree	
Life Span	Approximately 100 years or more.	
Remarks	This specification is for the reference, if there are differences between actual condition, the adjusting is according to the actual condition	

Solid core wall panels - superior strength and quality



We help plan your home and design it to perfection by carefully selecting from our widest range of best in class fittings and finishes. Use your favorite brands as you prefer or select from our own. The flexibility we offer is that you decide on the level of luxury to suite your budget. We will ensure quality is not compromised.



The light steel structures are galvanized to withstand high humidity, sea spray and the most demanding climatic conditions. We use high quality steel for your structure fabricated to perfection at factory. The entire frame is bolted at your site in double quick time.



Solid core lightweight wall panels are of the highest quality and strength. Even and smooth surfaces provide perfect finish with no plastering required. Made from solid fiber cement wall sand lightweight concrete core. No more leaks, dampness or white ants.

Fire resistant -Sound proof-better insulation.



The final product. -A house of high standards that will last you generations with value for every cent you spend. Smartly built for smart living completed in record time of 4 months.

Perfect finishes.



Container buildings



Modular steel buildings



Warehouse and factories



Multi story Housing and hotels



AQUIRE GLOBAL.

LOVE LIFE AND BUILD SMART.

Q&A

Q. Can sound travel across the wall panels.

A. All wall panels are sound proof, have longer resistance to fire, repel water, are termite proof and have less heat absorption than a conventional wall. Additionally our houses are earthquake resistant to scale of seven and can handle high wind loads of more than 80 MPH.

Q. Can I use nails to hang pictures and wall other features.

A. Yes you can drive in a concrete nail. However we recommend you use screw nails with roll plugs or hooks.

Q. How do I close a hole or damaged area on the wall?

A. You repair it as you would do with a conventional wall using filler, putty or cement depending on the size of damage.

Q. Can you make changes to these pre engineered houses.

A. You can make extensions as in conventional houses and open certain walls. However you must take precautions in making changes to the structure. In this case we recommend you show the structural drawings provided by us to a structural engineer and follow the engineers recommendations.

Q. What if I want to upgrade finishes like floor, doors and windows and bathrooms on a later day.

A. You can do so as in any conventional building. However consult a structural engineer for any high load activity or structural changes.

Q. What if I want to do additional wiring or plumbing on inside of a wall?

A. Go ahead do as you please. Then cover the wall with conventional methods.

Q. What will the value of my house be after a few years?

A. Just like in all buildings the value of your house will increase as material costs keep rising.

Q. What is the life span of a pre engineered house.

A. Pre engineered houses have been around for over 50 years and the material quality is highly improved. Your house/ building is expected to last longer than 50 years.

Q. Will the steel structure of the Building corrode from sea spray.

A. We use galvanized steel and core them with special coatings where needed. This is the same treatment as in the many aged bridges that you see on the coastline. So your building is safe from corrosion.

Q. What is the guarantee?

A. We guarantee against defects in structure for 20 years.

AQUIRE GLOBAL (PVT) LTD.

107 ST ANTHONY'S MAWATHA.

COLOMBO 3.

Sri Lanka.

www.aquireglobal.com

info@acquireglobal.com. Tel:+94117013011, 0777725655